

Switch

As one of the electric circuit parts, switch has a function of connecting circuit and on/off operating.

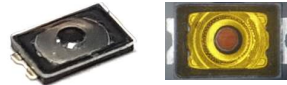
With large selection of switches, the electric circuit parts with function of connecting circuit for on/off operating, Switch Korea focuses every power to be the world-best switch brand with such advanced technology as precision press and mold, ultra-slim insert mold, tooling design & production and one-stop production system.

Switch Korea has developed and provided customers with 3,000 types of switches, leading the application models' multifunction, compact-sizing and high technology trend.

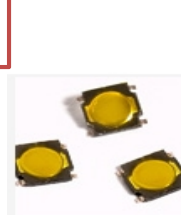
Product Application _ MP, Tablet, IoT, Headset



JTP3020/1158



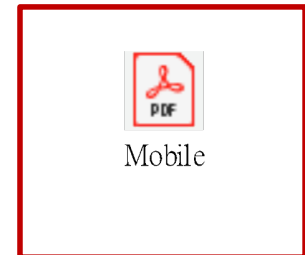
JTP1135J/1152



JTP1133R JSS1267



Switch line-up



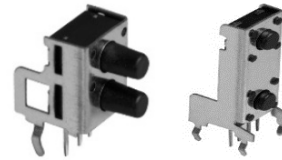
Product Application _ Telecom



JTP1236/1133R/1280/1289



JTP2243/2230



Switch line-up



JPS1258/2259T-A



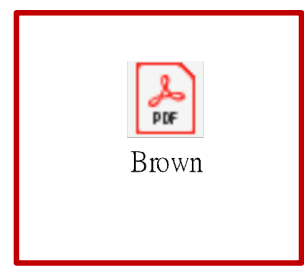
JTP3020



Product Application _ Brown goods & Medical



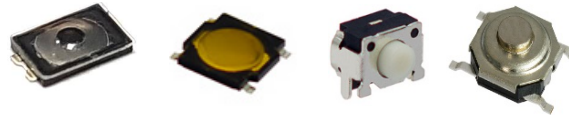
Switch Line-up



Product Application _ Notebook & Printer



JTP3020/1152/1133R/1140



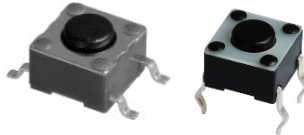
Switch Line-up



NB



JTP1138/1230



SWITCH
K O R E A

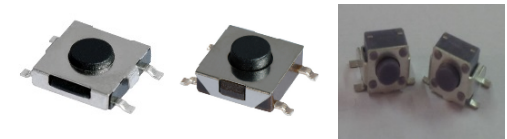
Product Application _ TV_MNT



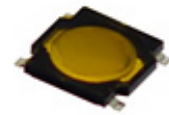
JTP1140



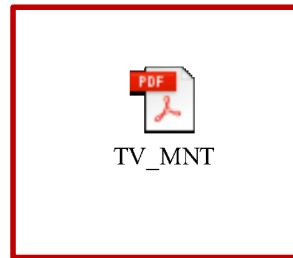
JTP1127/1169 / 1136S



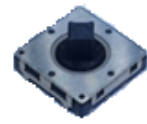
JTP1152



Switch line-up



JTM5116



JES1512GST



JTP1138



SWITCH
K O R E A

Product Application _ Washing machine

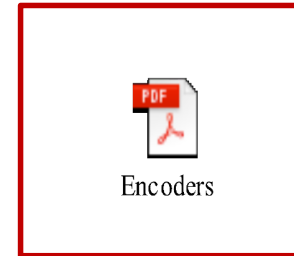


JES1612G Series

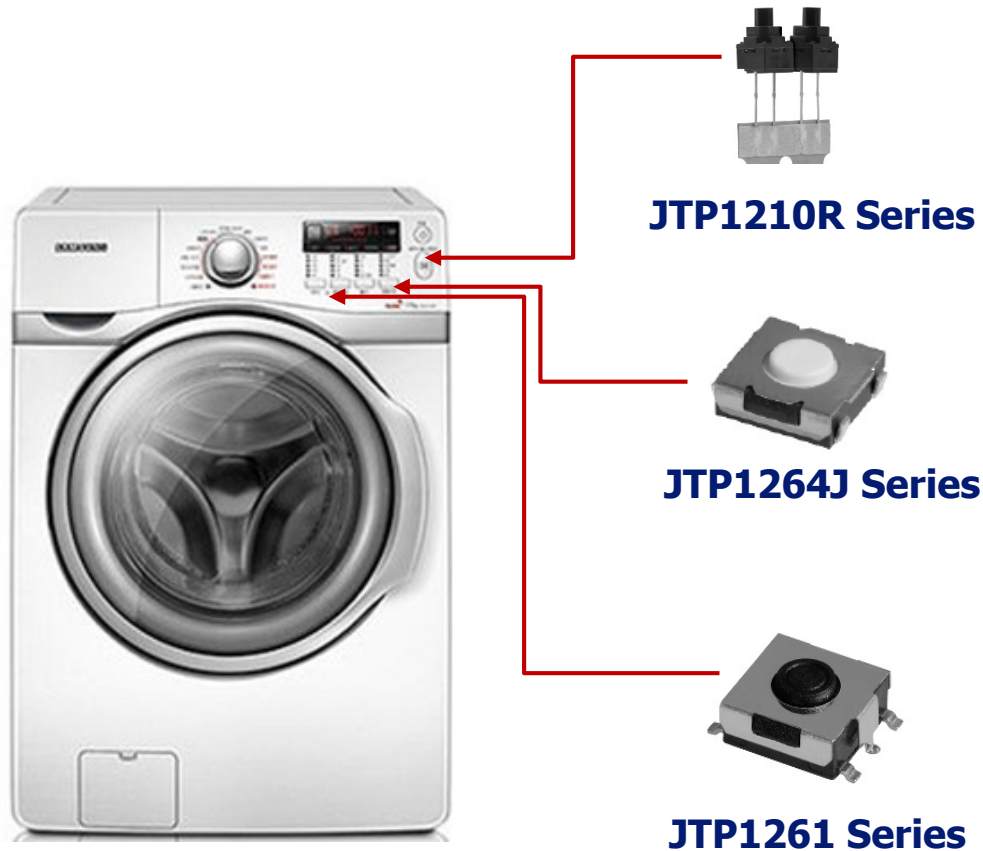


JES2016G Series

Encoder line-up



Product Application _ Washing machine



Tact line-up

A red-bordered box containing a PDF icon and the word "Tact".



Product Application _ Microwave oven



JES1512GST

JTS1230U

JTP1280 series

JTP1230 series



SWITCH
K O R E A

Product Application _ Industrial



**Lighting,
Factory automation,
Process automation,
Safety & security,
Metering & Utility**



SWITCH
K O R E A